



POLICE DEPARTMENT

ARVADA



2009 Annual Crime Report

Setting the Standard for Excellence

Created by the Crime Analysis Unit

EXECUTIVE SUMMARY

Citizen calls for service peaked in 2005, then fell for the fourth year in a row. Our most frequent citizen call type continues to be suspicious events, traffic accident, information and disturbance calls. The majority of high frequency call types are showing a decrease, one of the exceptions is domestics, which increased by 54 calls.

In 2009, there were 6,276 offenses reported within the city. This represents the third lowest total in the past five years. Although Arvada is showing a 3% reduction in total crime; person and property crimes show a slight increase.

Crimes against person totals include assault (simple/aggravated), homicide, kidnapping and sex offenses. This year Arvada experienced decreases in all crimes against persons, except sex offenses. The majority of the incidents involved “unwanted touching” by a known individual.

Property crime totals include arson, burglary, fraud/forgery, motor vehicle theft, robbery, stolen property, theft and vandalism. Property crime usually accounts for between 70% - 75% of Arvada’s total crime. Our property crime total has remained fairly steady, with only a 1% or 56 offense increase in 2009.

Current crime statistics indicate that property crime is down in most categories. Theft from vehicles has continued to be a problem for Arvada residents. Fraud has risen steadily in the past five years. It reached its highest level on record in 2009, with 458 incidents. Identity theft accounts for 96% of fraud committed in Arvada. The crime of fraud is particularly troublesome to the police because much of it is committed on the internet and fraud transcends jurisdictional boundaries.

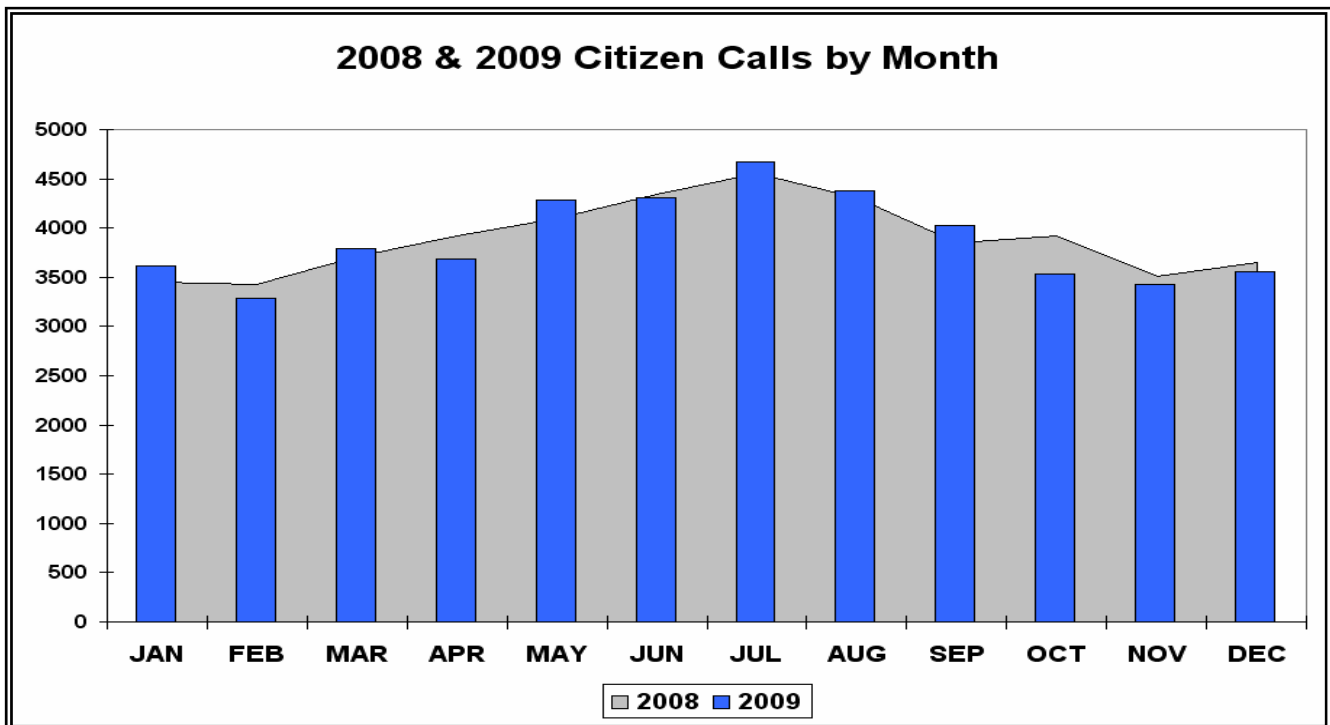
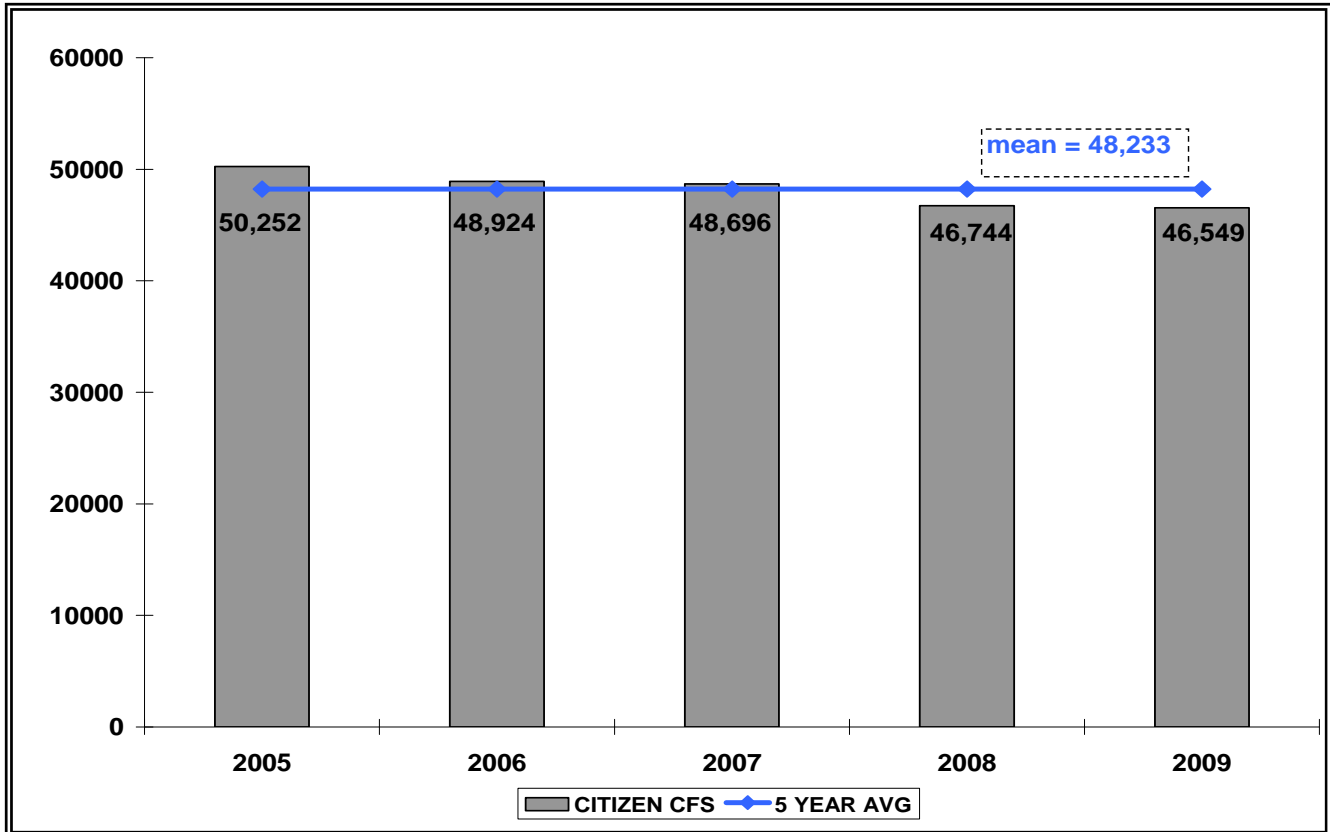
Drug and weapon offenses make up the majority of society crime in Arvada. Declines in both of these categories has totaled in a 22% decrease.

Through Directed Patrol Intervention (DPI), the department continues to identify emerging crime patterns and trends within the community. Combining this information with information from other agencies, regional task forces, identifying the existence of known offenders and parolees within our community allows the department to respond more intelligently with the deployment of police resources to apprehend criminals and deter crime.

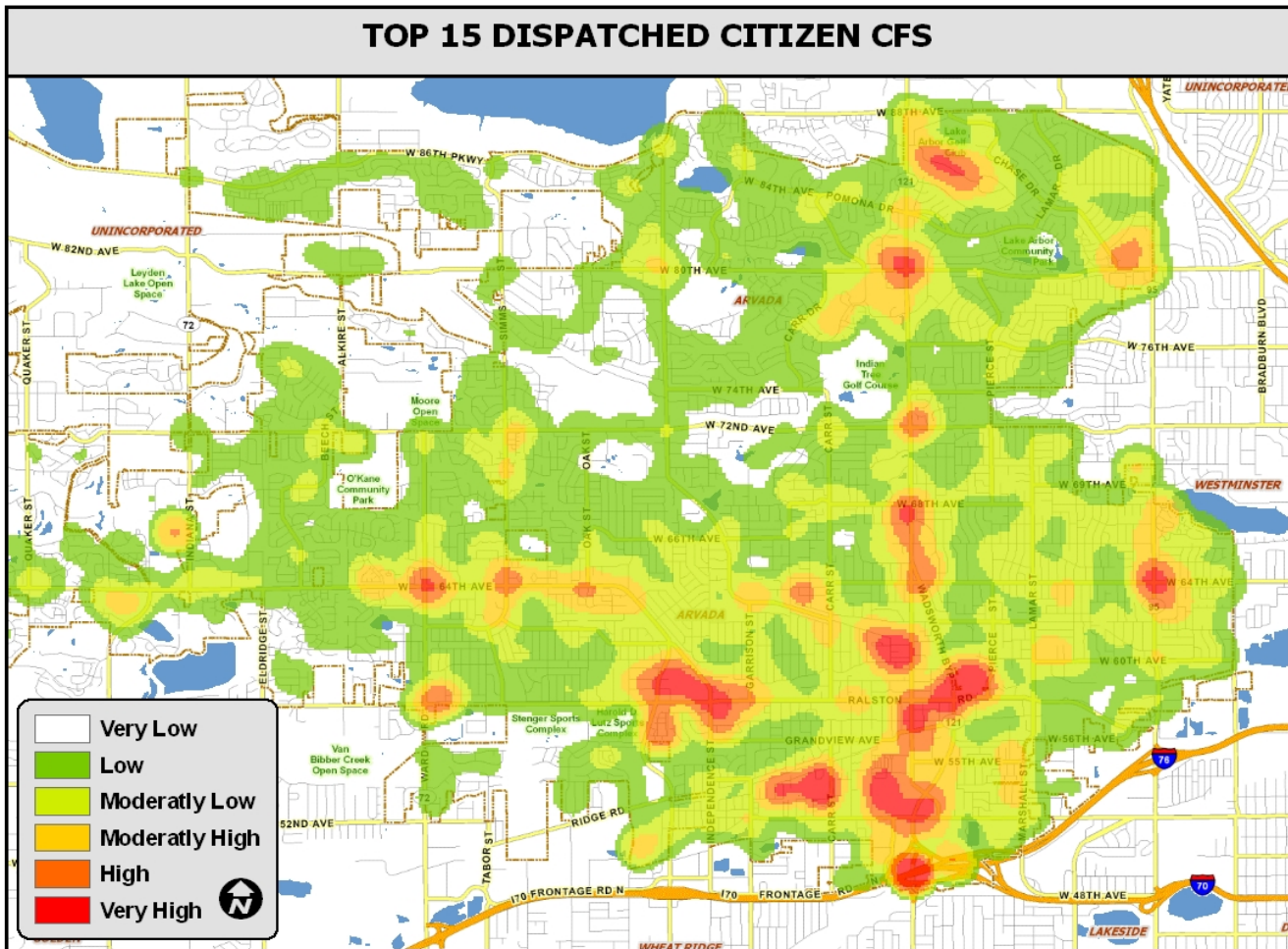
The police department looks forward to further reductions in crime and disorder as a result of partnering with other city departments and members of the community.

CITIZEN-INITIATED CALLS

The Arvada Police Department received 46,549 Citizen-Initiated calls for service (CFS) during 2009 - a slight change from the 46,744 calls received in 2008.



CITIZEN-INITIATED CALLS



Suspicious events and traffic accidents continue to be the most frequent type of dispatched call. Information calls moved into the top three type of call received. Citizens requesting fingerprinting has almost doubled. According to the Police Service Technicians, this is due to offering fingerprinting three days instead of one day of the week and the loosening of the requirements to accommodate outside city residents.

RANK	EVENT TYPE:	2008	2009	CHANGE
1	SUSPICIOUS EVENTS	2983	2789	-7%
2	TRAFFIC ACCIDENT	2445	2039	-17%
3	INFORMATION	1409	1383	-2%
4	DISTURBANCE	1469	1352	-8%
5	DOMESTIC	1274	1328	4%
6	NOISE DISTURBANCE	1286	1209	-6%
7	ALARMS	1212	1187	-2%
8	STRAY ANIMAL	1134	1162	2%
9	WELFARE CHECK	1010	1000	-1%
10	THEFT	1025	978	-5%
11	911	745	834	12%
12	FINGERPRINTING	485	829	71%
13	CIVIL ASSIST	673	771	15%
14	FIRST AID	805	726	-10%
15	TRAFFIC HAZARD	603	688	14%

The majority of high frequency call types are showing a decrease, one of the exceptions is Domestic, which increased by 54 calls compared to 2008.

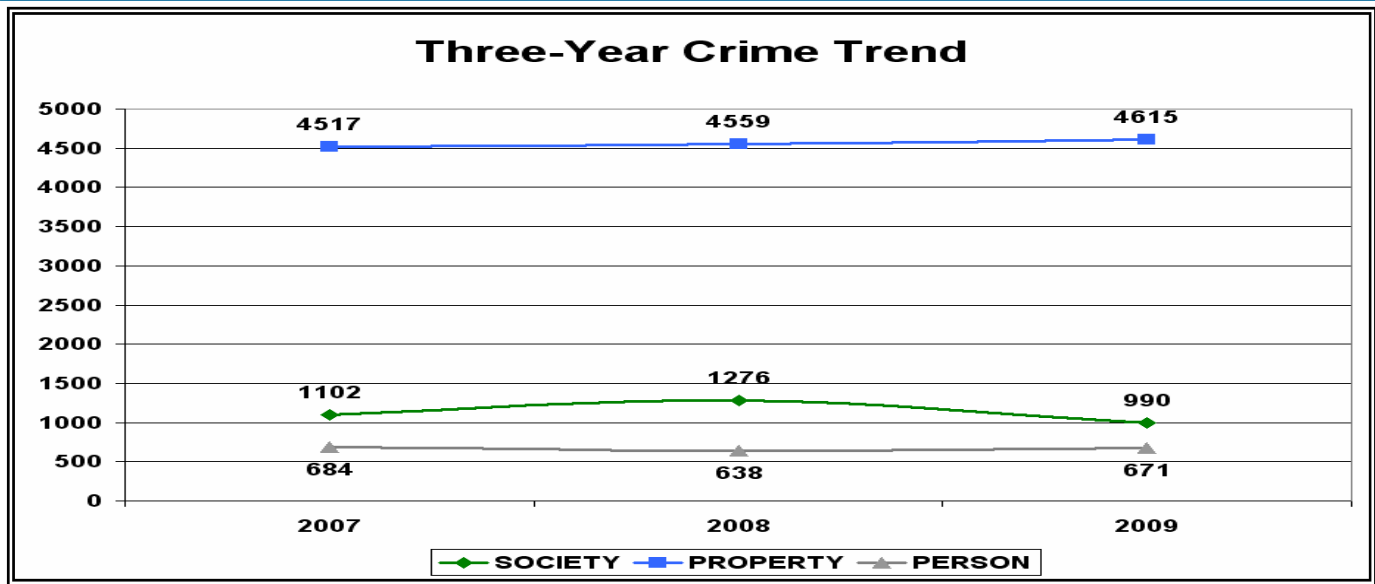
INCIDENT DATA

The following table summarizes crime in 2009 compared to previous years.

The ↑ ↓ symbols indicate crimes that are higher or lower (based on the usual range).

Type of Crime:	2004 to 2008 Average	Usual Range	2008	2009	% Change from 2008 to 2009
Crime Against Person					
ASSAULT - AGGRAVATED	92.8	85-100	98	99	1%
ASSAULT - SIMPLE	369.6	309-430	415	415	No Change
HOMICIDE	1.4	0-3	1	2	(+) One offense
↓ KIDNAPPING	20.4	16-25	19	15	-21%
↑ SEX OFFENSES	97.8	84-111	105	140	33%
Crime Against Property					
↓ ARSON	26.2	18-35	31	17	-45%
↓ BURGLARY	490.8	435-546	409	408	No Change
↓ COUNTERFEITING/FORGERY	188.8	111-266	95	100	5%
EMBEZZLEMENT	0.6	0-1	0	0	No Change
EXTORTION/BLACKMAIL	0.8	0-2	0	1	(+) One offense
↑ FRAUD OFFENSES	208.6	95-322	361	458	27%
↓ MOTOR VEHICLE THEFT	383.6	246-521	240	229	-5%
↓ ROBBERY	51.4	46-57	62	38	-39%
↓ STOLEN PROPERTY	62	46-78	38	36	-5%
THEFT OFFENSES	2390.2	2058-2723	2084	2107	1%
↓ VANDALISM	1395.4	1259-1532	1239	1221	-1%
Crime Against Society					
DRUG OFFENSES	885.2	649-1122	1212	953	-21%
GAMBLING	0.2	0-1	0	0	No Change
PORNOGRAPHY	0.4	0-1	0	0	No Change
PROSTITUTION	2.8	0-5	4	3	(-) One offense
↓ WEAPON OFFENSES	46	37-55	60	34	-43%

INCIDENT DATA



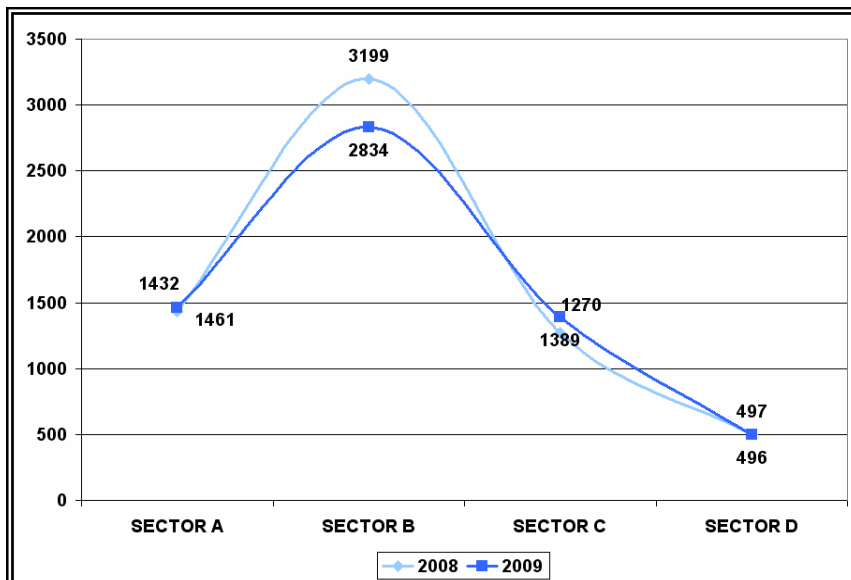
Although Arvada experienced a 3% reduction in total crime; person and property crimes are showing a slight increase.

A 33% increase in sex offenses is driving the person crime increase and a 27% increase in Fraud has contributed to the property crime increase.

Crimes Against:	2008 Offense Count	2009 Offense Count	Change
Person	638	671	5%
Property	4559	4615	1%
Society	1276	990	-22%
Total:	6473	6276	-3%

CRIME BY SECTOR

Understanding crime in Arvada means understanding the characteristics and contrasts of the residential and commercial communities.



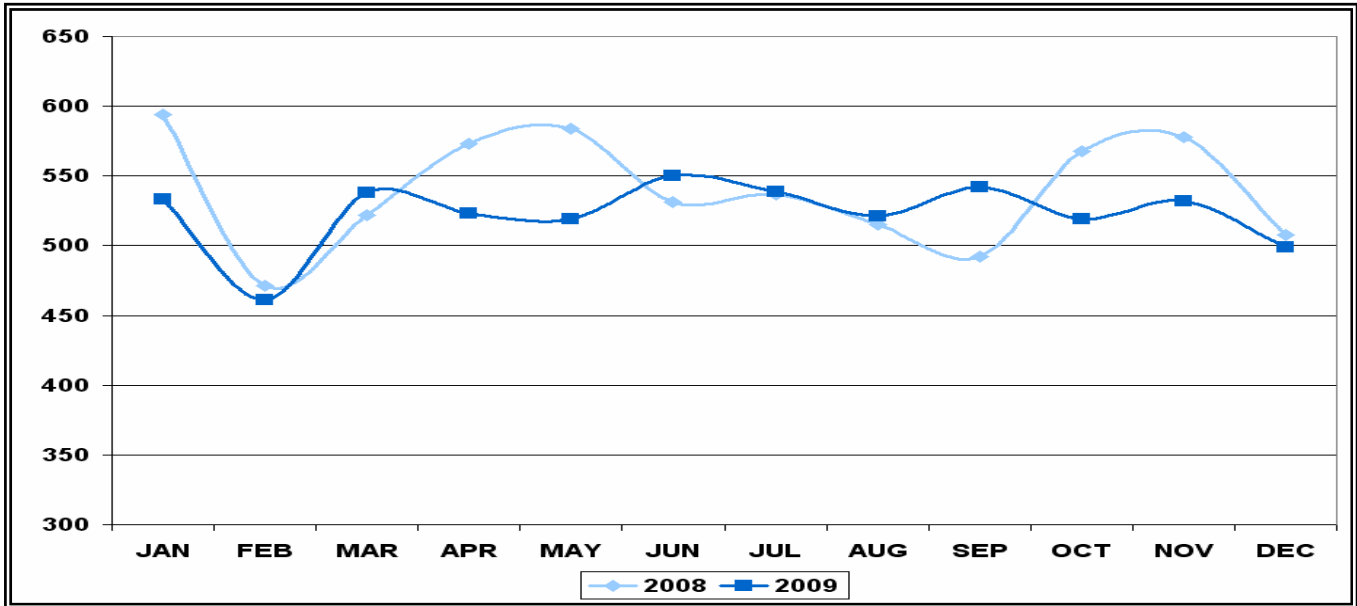
More crime is found in Sector B because it is a high population area that contains both residential and commercial communities.

Sectors C and D are residential area with a less dense population. Neighborhoods that are run-down, graffiti-covered, and in a state of disorder tend to negatively influence the crime rate. This type of neighborhood is rare in Arvada.

INCIDENT DATA

CRIME BY MONTH

Crime dropped to its low in February, then increased and remained steady for the rest of the year.



Crime by Season	Top Five Crimes	Count
Winter		
Dec to Feb	THEFT - OTHER	230
	FDCT - VEHICLE	154
	CRIM MISCHIEF (\$101 - \$1000)	127
	ID THEFT - USE	119
	DRUG PARA POSS - MUNI	68
Spring		
Mar to May	THEFT - OTHER	248
	FDCT - VEHICLE	152
	CRIM MISCHIEF (\$101 - \$1000)	146
	ID THEFT - USE	81
	DRUG PARA POSS - MUNI	77



Regardless of season, theft and vandalism are persistent concerns, no matter what the weather.

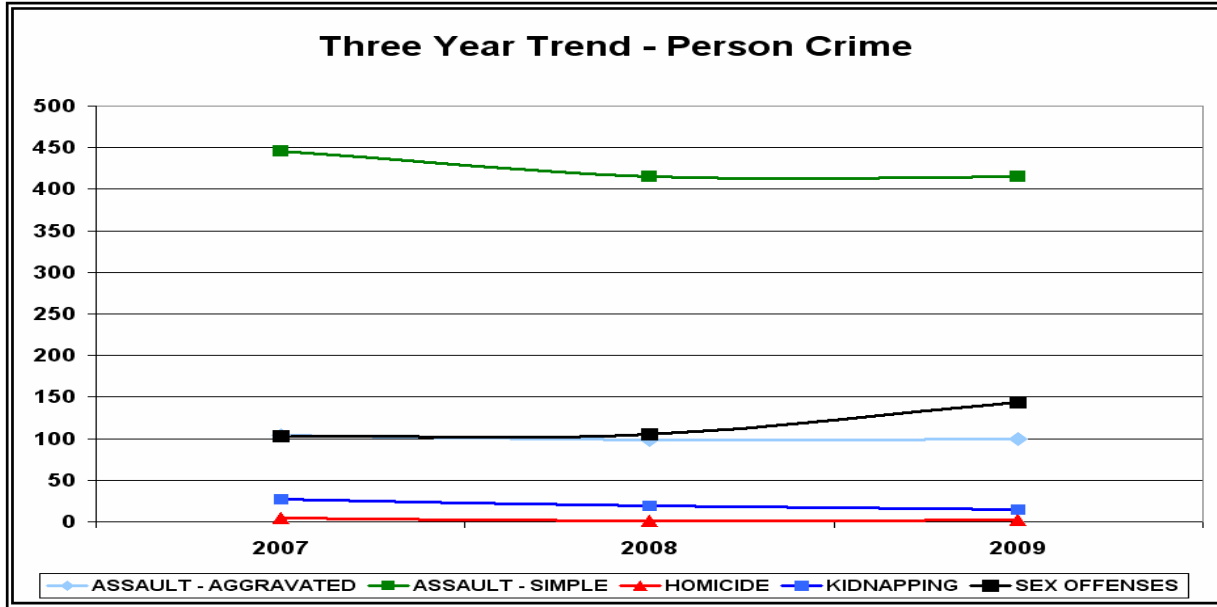
We currently try to identify the top offenders in the hope that we can provide resources to put those individuals on a productive path.

The police department will continue to research solutions on how to decrease theft and vandalism in 2010.

Crime by Season	Top Five Crimes	Count
Summer		
Jun to Aug	THEFT - OTHER	216
	FDCT - VEHICLE	209
	CRIM MISCHIEF (\$101 - \$1000)	179
	ID THEFT - USE	84
	MOTOR VEH THEFT	71
Autumn		
Sep to Nov	THEFT - OTHER	239
	FDCT - VEHICLE	193
	CRIM MISCHIEF (\$101 - \$1000)	106
	ID THEFT - USE	91
	GRAFFITI PROHIBITED - MUNI	68

PERSON CRIME

Eleven percent of crime in Arvada can be categorized as Crime Against Person – Homicide, Assault, Kidnapping and Sex Offenses. Total person crime increased by 5% compared to the same time last year.



SEX OFFENSES

Sex offenses are categorized using Uniform Crime Reporting (UCR) categories (see table below). Thirty-seven incidents were determined to be “unfounded” and were not included in this analysis.

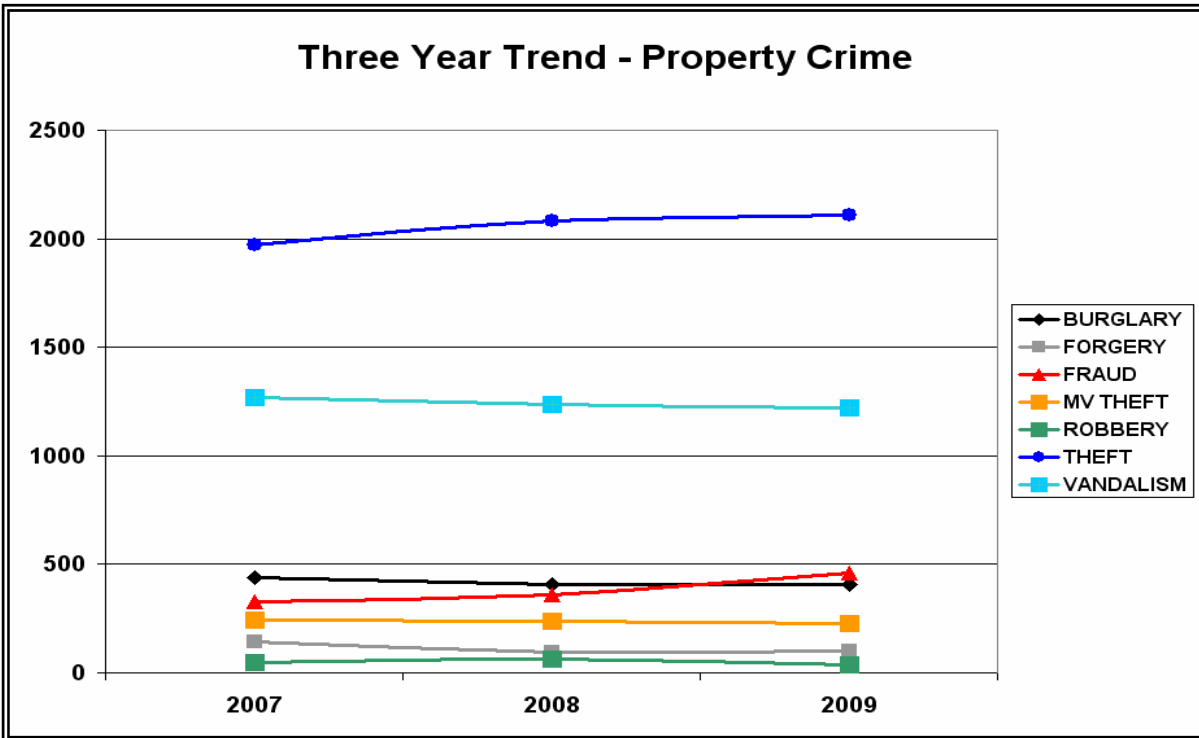
SEX OFFENSE BY TYPE	2008	2009	CHANGE
INVOLVE FORCE:			
RAPE	26	35	35%
SODOMY	3	3	No Change
SEX ASLT OBJECT	1	3	(+) Two offense
FONDLE	70	93	33%
NO FORCE:			
INCEST	2	2	No Change
STATUTORY RAPE	3	4	(+) One offense
TOTAL SEX OFFENSES	105	140	33%

Rape has increased by 9 incidents; involving 35 victims. The offender in most cases is an acquaintance of the victim. Sixty-three percent of the victims were under the age of 21. The most common scenario involves a date or flirtation that becomes a sexual assault.

Fondling or unwanted sexual contact increased by 23 incidents. The majority of the 108 victims were under the age of 18 and knew their offender. The most common scenario involves a child with a family member or friend.

PROPERTY CRIME

The majority (74%) of crime in Arvada can be categorized as Crime Against Property. Total property crime has increased by 1% or 56 incidents. Theft and economic crime are the only crimes to increase in 2009.



THEFT—VEHICLE TRESPASS (FDCT)

Theft can be broken down into many categories, like shoplifting, purse snatching or theft from vehicles. Theft from vehicles has continued to be a problem for Arvada residents. Most vehicle break-ins are carried out by suspects who take advantage of drivers who leave vehicles unlocked with valuables in plain sight.

There were 708 theft from cars in 2009; showing a 6% increase from 2008.

Arvada thieves have been known to take all kinds of items out of vehicles, but it is even more attractive if it is **CRAVED**—an acronym that stands for Concealable, Removable, Available, Valuable, Enjoyable, and Disposable.¹



¹ Ronald Clarke, Hot Products: Understanding, Anticipating, and Reducing the Demand for Stolen Goods (London: Home Office, 1999).

PROPERTY CRIME (CONTINUED)

Economic crimes are Forgery and Fraud, like peanut butter and jelly, this type of crime goes hand and hand. If one goes up the other usually does too. Forgery involves the altering of a document or currency and Fraud is used to report the property that is obtained deceitfully.

COUNTERFEITING / FORGERY

In 2009, forgery increased by 5 cases. There were slightly less counterfeit bills and more forged drivers licenses, checks and other miscellaneous documents.

FORGERY OFFENSES	2008	2009	CHANGE
COUNTERFEIT BILLS	29	24	-17%
FORGERY-CHECK ETC	66	76	15%
TOTAL:	95	100	5%

FRAUD

The following two categories represent most Fraud in Arvada:

- Id theft is falsely representing one's identity or position, and acting in the stolen character to deceive others and thereby gain a profit.
- Swindling is the use of some other deceptive scheme or device, to obtain money, goods, or other things of value. It includes Craig's list and contractor cons, send money to get money schemes and renting but not returning.

FRAUD OFFENSES	2008	2009	CHANGE
ID THEFT	328	441	34%
SWINDLE	33	17	-48%
TOTAL:	361	458	27%

Identity theft accounts for 96% of fraud committed in Arvada. Id Theft has increased by 34% in 2009. The crime of identity theft occurs when someone, without the victim's knowledge, acquires a piece of personal information and uses it to gain something of value.

Popular types of identity theft are credit card fraud, using victim information to sign up for a service, and opening a bank account in the victim's name to make transfers or write bad checks.

Reasons why ID Theft is on the rise:

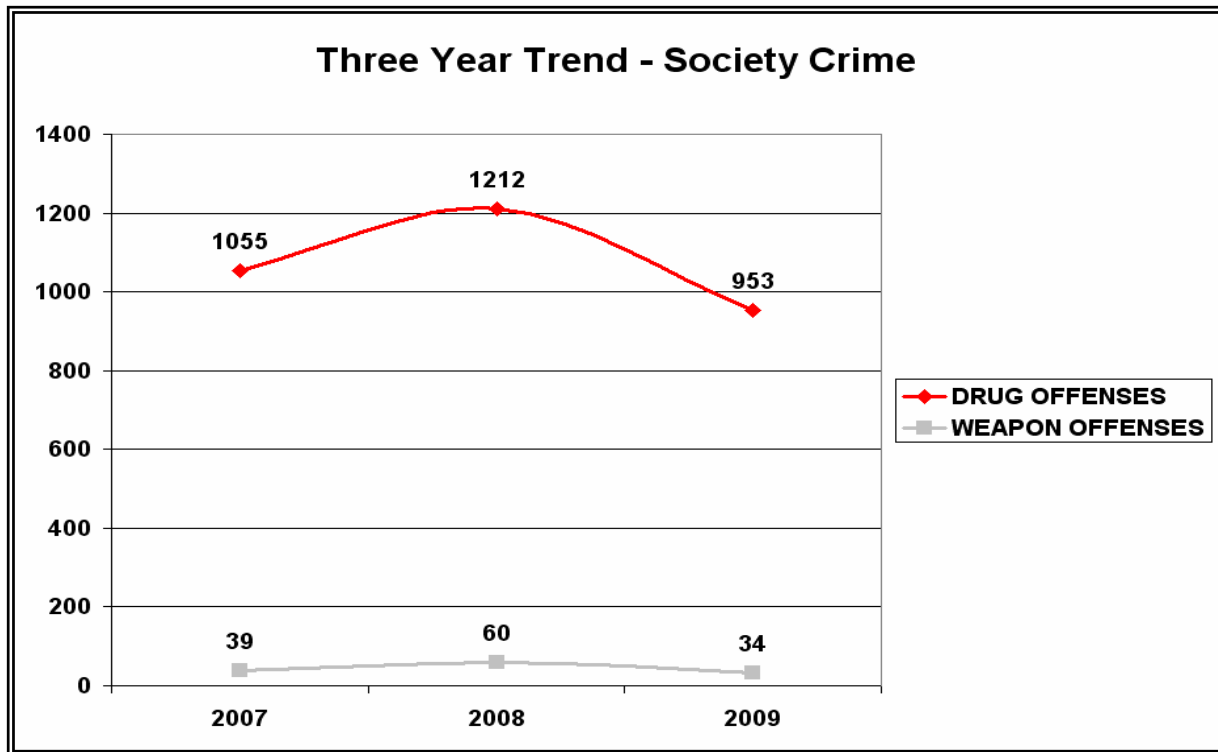
- ◆ Criminals took advantage of the unemployed by offering work at home scams and fake job listings.
- ◆ More individuals discovered they were victims of ID Theft after applying for government sponsored programs requiring a social security number.
- ◆ Crime classification has improved. Detectives have been educating the police department on methods to correctly classify economic crime.



SOCIETY CRIME

Sixteen percent (990 offenses) of crime in Arvada can be categorized as Crime Against Society – Drug Offenses, Pornography, Prostitution and Weapon Offenses.

Drug and weapon offenses make up the majority of society crime in Arvada. Declines in both of these categories has resulted in a 22% decrease.



Arvada is experiencing a decline in Society crime for the first time in three years.

Drug offenses make up the majority of society crime. The drug offenses are comprised of individuals who have possessed, distributed or manufactured drugs and those who have been in possession of drug paraphernalia (pipes, bongs etc.).

Arvada had 506 drug violations, the majority involving marijuana, followed by methamphetamine. There were 447 drug paraphernalia violations, resulting in 1189 items seized in 2009.



TYPE OF DRUG VIOLATION:	COUNT
AMPHETAMINE	72
COCAINE	17
HALLUCINOGEN	12
MARIJUANA	380
OPIUM	12
OTHER	13
TOTAL	506



NON-CRIMINAL OFFENSES

The table below shows the top 10 non-criminal offenses reported in 2009. The non-criminal offenses listed below account for 76% of all non-criminal offenses in Arvada. Unfounded events are included in the count below.

RANK	NON-CRIMINAL OFFENSES	2008	2009	CHANGE
1	FIELD CONTACT	928	1070	15%
2	DISTURBANCE - DOMESTIC	1003	1015	1%
3	INFORMATION	895	712	-20%
4	DETOX HOLD	544	473	-13%
5	MENTAL HEALTH HOLD	412	454	10%
6	FOUND PROPERTY	367	366	0%
7	RUNAWAY (UNDER AGE 18)	300	282	-6%
8	DISTURBANCE	249	235	-6%
9	SUSPICIOUS INCIDENT	131	183	40%
10	ASSIST OTHER AGENCY	105	135	29%

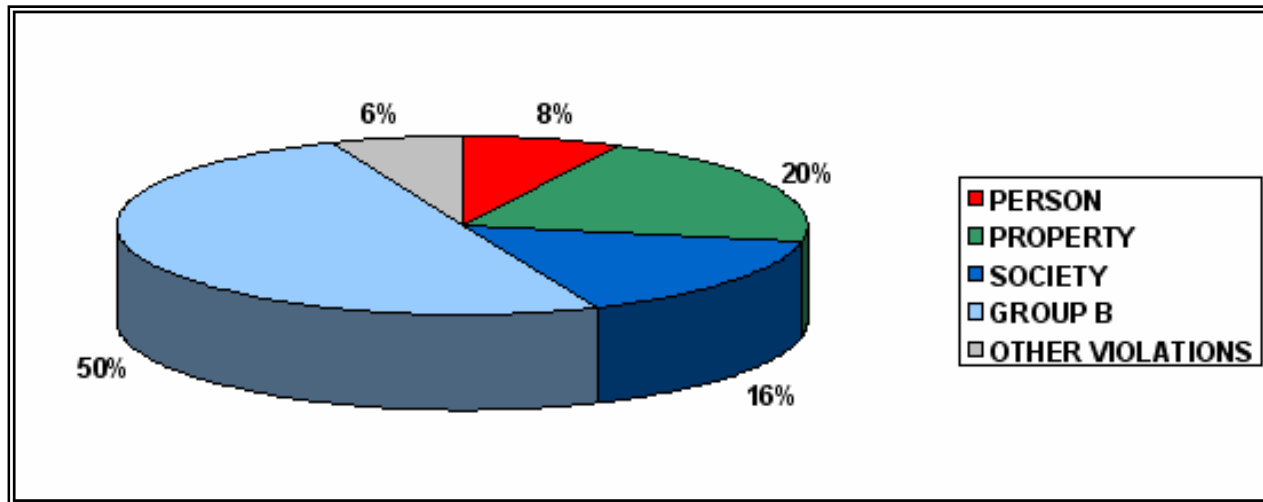
Arvada is showing a 142 incident increase in the number of field contact reports taken. Suspicious incident reports also are on the rise. Both may be the result of the Directed Patrol Intervention (DPI) projects, that focus on specific locations in Arvada combined, with the Tactical Information Group (TIG) list that focuses on persons of interest.

HIGH FREQUENCY NON-CRIMINAL LOCATIONS

RANK	ADDRESS		COUNT	TOP 3 NON CRIMINAL OFFENSE
1	7951 W 65 AV	ARVADA HIGH SCHOOL	52	INFORMATION - MENTAL HEALTH HOLD - FOUND PROPERTY
2	5383 CARR ST	PARKVIEW VILLAGE APARTMENTS	35	DISTURBANCE DOMESTIC - RUNAWAY - INFORMATION
3	7355 W 58 AV	7-11 AND GUNTHER TOODY	32	DETOX HOLD - DOMESTIC DISTURBANCE - SUSPICIOUS INCIDENT
4	7525 W 57 AV	LIBRARY	31	FIELD CONTACT - DISTURBANCE - DETOX HOLD
5	11595 ALLENDALE DR	ARVADA WEST HIGH SCHOOL	30	INFORMATION - MENTAL HEALTH HOLD - FIELD CONTACT
6	9731 W 58 AV	KING SOOPERS	22	FIELD CONTACT - DETOX HOLD - WELFARE CHECK
7	9575 W 57 AV	BINKERS PUB	22	DETOX HOLD - INFORMATION - DOMESTIC DISTURBANCE
8	5354 ALLISON ST	ALLISON VILLAGE APT	19	DETOX HOLD - DISTURBANCE DOMESTIC - RECOVERED STOLEN VEHICLE
9	12215 W 58 AV	VIKING SQUARE APT	19	DISTURBANCE DOMESTIC - FIELD CONTACT - INFORMATION
10	9145 OBERON RD	GRANDVIEW APARTMENTS	19	DISTURBANCE DOMESTIC - MENTAL HEALTH HOLD - DISTURBANCE

ARRESTS IN ARVADA

This section includes all arrests related to individuals taken into custody and/or given a summons. Most arrests involve a criminal violation; the exception is custody arrests related to habitual traffic offenders. Summonses related to Traffic Violations will be covered in the 2009 Traffic Safety report.



GROUP B ARRESTS = 50%		COUNT
ALL OTHER OFFENSES		1335
BAD CHECKS		1
CURFEW/LOITERING		73
DISORDERLY CONDUCT		169
DRIVING UNDER THE INFLUENCE		356
FAMILY OFFENSE - NONVIOLENT		74
LIQUOR LAW VIOLATIONS		244
PEEPING TOM		1
TRESPASS OF REAL PROPERTY		118

There were 4730 individuals arrested in 2009. Fifty percent of arrests involve a Group B offense.

Group B offenses includes all of the crimes that were not covered under Person, Property or Society.

PROPERTY CRIME ARREST = 20%		COUNT
ARSON		6
BURGLARY		39
COUNTERFEITING/FORGERY		58
EXTORTION/BLACKMAIL		1
FRAUD OFFENSES		48
MV THEFT		23
ROBBERY		7
STOLEN PROPERTY OFFENSES		29
THEFT OFFENSES		560
VANDALISM		183

PERSON CRIME ARREST = 8%		COUNT
ASSAULT - AGGRAVATED		66
ASSAULT - SIMPLE		255
HOMICIDE		2
KIDNAPPING		15
SEX OFFENSE		22

SOCIETY CRIME ARREST = 16%		COUNT
DRUG OFFENSES		722
PROSTITUTION		4
WEAPONS OFFENSES		28

TOP TEN NON-CRIMINAL ARRESTS
OPEN CONTAINER - MUNI
DRIVING AFTER REVOCATION (HTO)
DISOBEY POLICE - MUNI
FIREWORKS PROHIBITED - MUNI
NOISE DISTURB- MUNI
THROWING MISSILES - MUNI
PARK CURFEW - MUNI
SMOKING VIOL IND - MUNI
URINATION IN PUBLIC- MUNI
VIOLATION OF PAROLE/PROBATION

ARRESTS IN ARVADA

Arrest Demographics:	
Sex	
Male	3499
Female	1231
Age Range	
< = 12	55
13 to 19	1723
20 to 29	1362
30 to 39	704
40 to 49	574
Fifty +	312
Race	
Asian	49
Black	188
Indian	12
Unknown	6
White	4475
Lives in Arvada	
Yes	2925
No	1786
Unknown	19

Characteristic of an offender:

- Male (average age = 27)
- Female (average age = 28)
- 95% Race = White
- 62% live in the city of Arvada.



The table below shows high frequency arrests in Arvada

FIRST	LAST	SEX	COUNT	MOST OFTEN ARRESTED FOR:
MICHAEL	FORTSON	M	16	THEFT, FTA ARVADA & TRESPASS
TAMMY	CASTELLANO	F	11	TRESPASS, OPEN CONTAINER & THEFT
MICHAEL	PUMPHREY	M	9	PARK CURFEW, FALSE REPORT & DISOBEY POLICE
TRAVIS	HOLMES	M	8	THEFT, OPEN CONTAINER, SIMPLE ASSAULT
FREDRICK	WILDT	M	8	ALCOHOL VIOLATIONS, FTA ARVADA & THEFT
SCOTT	PAWLUK	M	7	TRESPASS, OPEN CONTAINER & THEFT
JUVENILE - AGE 14		M	6	FDCT, TRESPASS & DISOBEY POLICE
MATTHEW	LENGER	M	6	PROBATION VIOLATION, THEFT & DISORDERLY CONDUCT
JUVENILE - AGE 16		M	6	DISORDERLY CONDUCT, CRIMINAL MISCHIEF & TRESPASS
TERENCE	TURNER	M	6	OPEN CONTAINER, FTA ARVADA & INTERFERENCE WITH POLICE
JUVENILE - AGE 14		M	6	FDCT, THEFT & BURGLARY
JUVENILE - AGE 15		M	6	FTA ARVADA, CURFEW VIOLATION & THEFT
JUSTIN	CHAVEZ	M	6	RESISTING ARREST, THEFT & CRIMINAL MISCHIEF

Important Note: *The statistics presented are the most accurate available on the date they were compiled. These statistics may differ slightly from those published in subsequent reports – because of later re-classification based on facts discovered during the investigation and specific categorical guidelines. Please contact Nora Bensko at (720) 898-6940 with any questions about crime statistics.*

POLICE SERVICES & CONTACTS

The Arvada Police Department Web Site

<http://arvadapd.org/crime-and-prevention>

Home > Crime and Prevention

Crime and Prevention

Sir Robert Peel is recognized as the father of modern policing. In 1829 he founded the Metropolitan Police Force, better known as Bobbies. Sir Robert Peel wrote that the number one principle of policing was that *"the basic mission for which the police exist is to prevent crime and disorder."*

Crime prevention as a policing cornerstone
Crime prevention is a proactive form of police work constituting one of the cornerstones of community policing. It is the reason that police officers patrol the streets: the police visibility engenders security and trust, and discourages criminal activity.

Crime prevention is the idea that the police are *a part of* and not *apart from* the community.

Arvada Police Department Embraces Crime Prevention
Arvada Police Department embraces this philosophy in all operations of the department and is always looking for ways to improve service delivery.

There is an old saying: *It is better to prepare and prevent, than to repair and repent.*

Related Photos

- See all related photos in the Community Photo Gallery

Related Links

- Apartment and Rental Community Safety
- Auto Theft Awareness
- Centers for Disease Control and Violence
- Colorado Bureau of Investigation Sex Offender Website
- Colorado Crime Victims Rights
- Community Resource Impact Team
- Community Service Worksheet
- Computer and Internet Security
- Counter Terrorism

On our website you can:

- ◆ View crime prevention tips
- ◆ View current contact information
- ◆ View crime statistics
- ◆ Report a crime
- ◆ Order a crime report, photos or dispatch cd
- ◆ Make an online minor traffic accident report
- ◆ Map crime locations on line (RAIDS & Crime Reports)
- ◆ Help us solve a crime
- ◆ Learn about crime prevention
- ◆ Watch KATV's Cop Talk– This is a show designed to promote community policing concepts in Arvada via cable television.

Crime Analysis Contact Information

Nora Bensko: 720-898-6940 (Tue, Wed, Thu & Fri)
Susan Land: 720-898-6941 (Mon, Tue, Wed & Thu)